

Prospect Generation - In Brazil, appraisal is made in the offshore blocks of Campos and Santos basins to identify lead prospects for exploratory drilling. A block diagram (Figure - 1) shown below exhibits Brazil Presalt (Sag reservoirs and Barremian source intervals) and Post salt Albian age reservoirs. Several prospects are identified in the identified intervals. One of the identified lead prospect is shown in Figure - 2. The prospects are identified based on the recognition of hydrocarbon play in the basin, interpretation and mapping the Play trends. This is both in the frontier exploration blocks and field development blocks. Extensive 2D and 3D seismic data sets are used. Well logs and other geophysical tools are applied for the evaluations. Figure - 3 exhibits a discovery field appraisal study in Brazil Campos basin offshore by the company.

Figure - 1

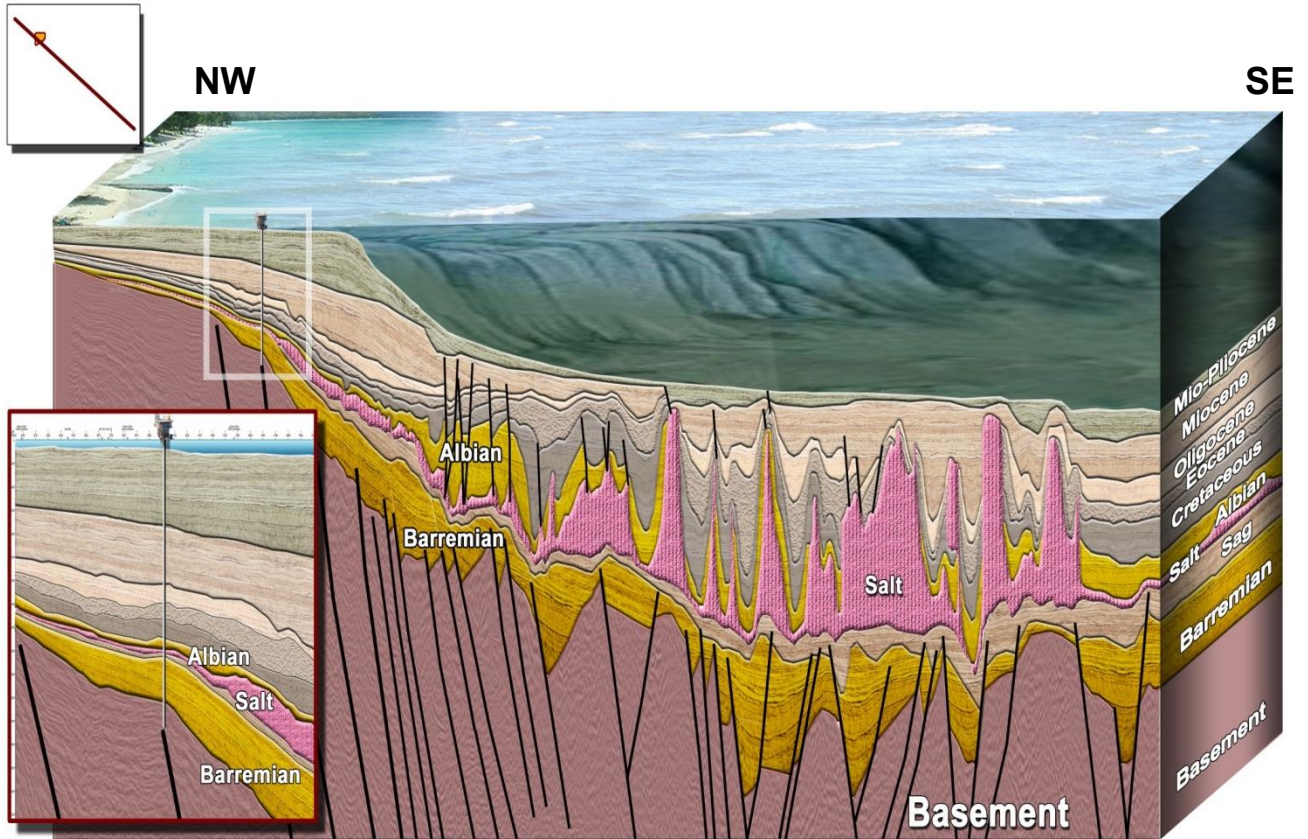


Figure - 2

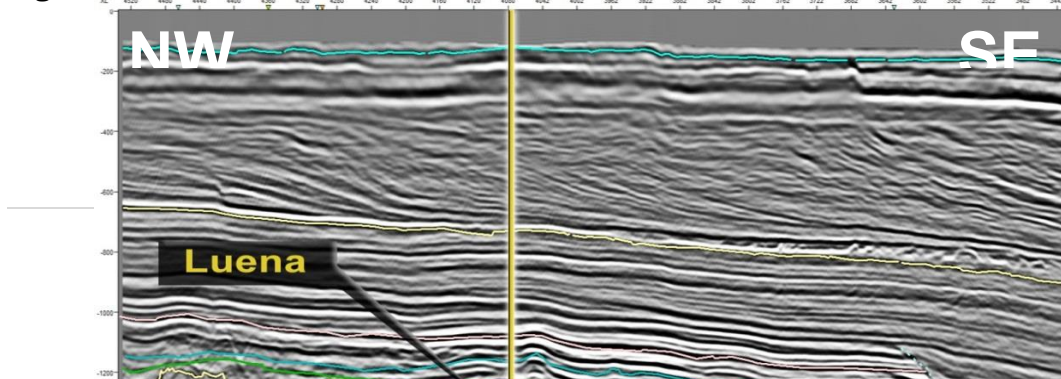
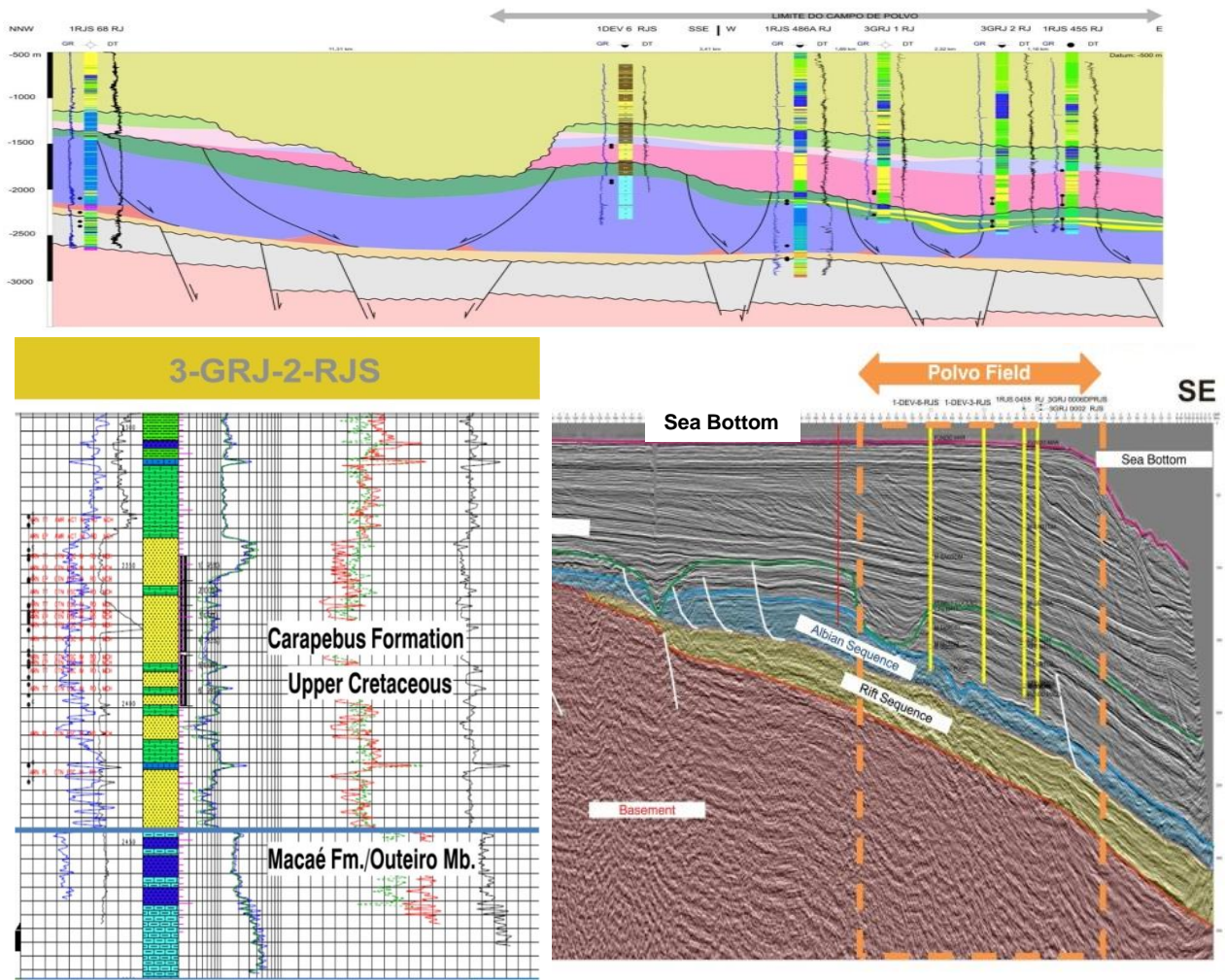
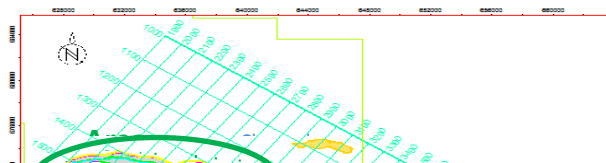


Figure -3



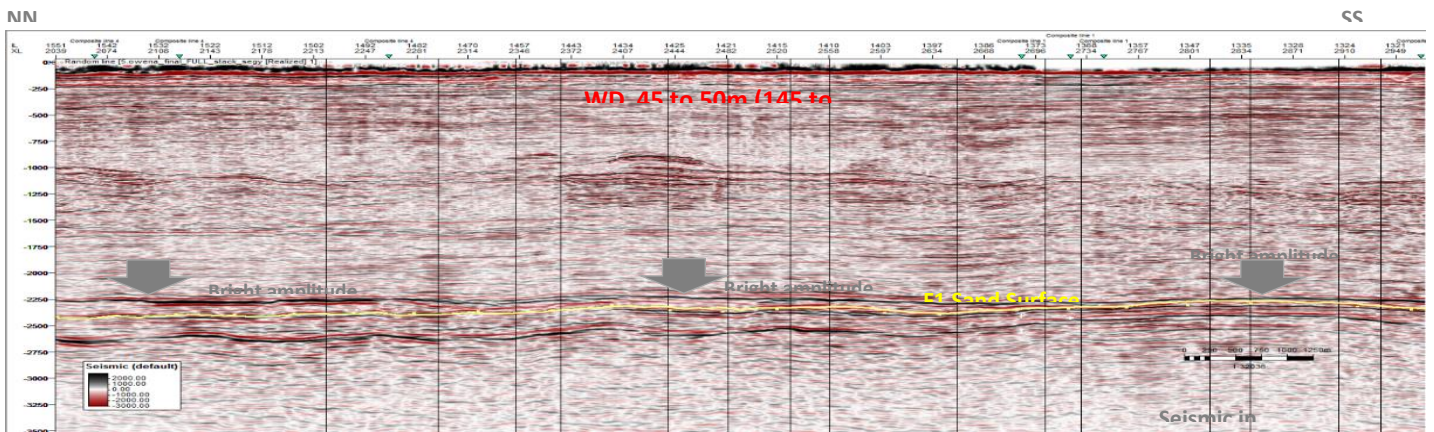
Another offshore study the company made is in Nigeria's Dahomey embayment. This is located on the southern edge of Northwest African margin wherein substantial discoveries are made. Here the company identified several lead prospects using 3D seismic data set to explore for



drilling. Figure-4 shows the identified leads and figure-5 shows the location of one identified lead on seismic trace.

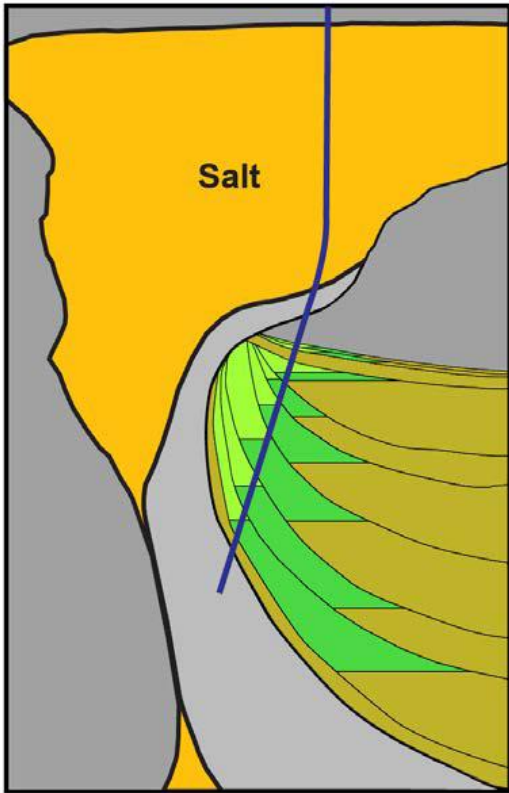
Figure - 4

Figure - 5



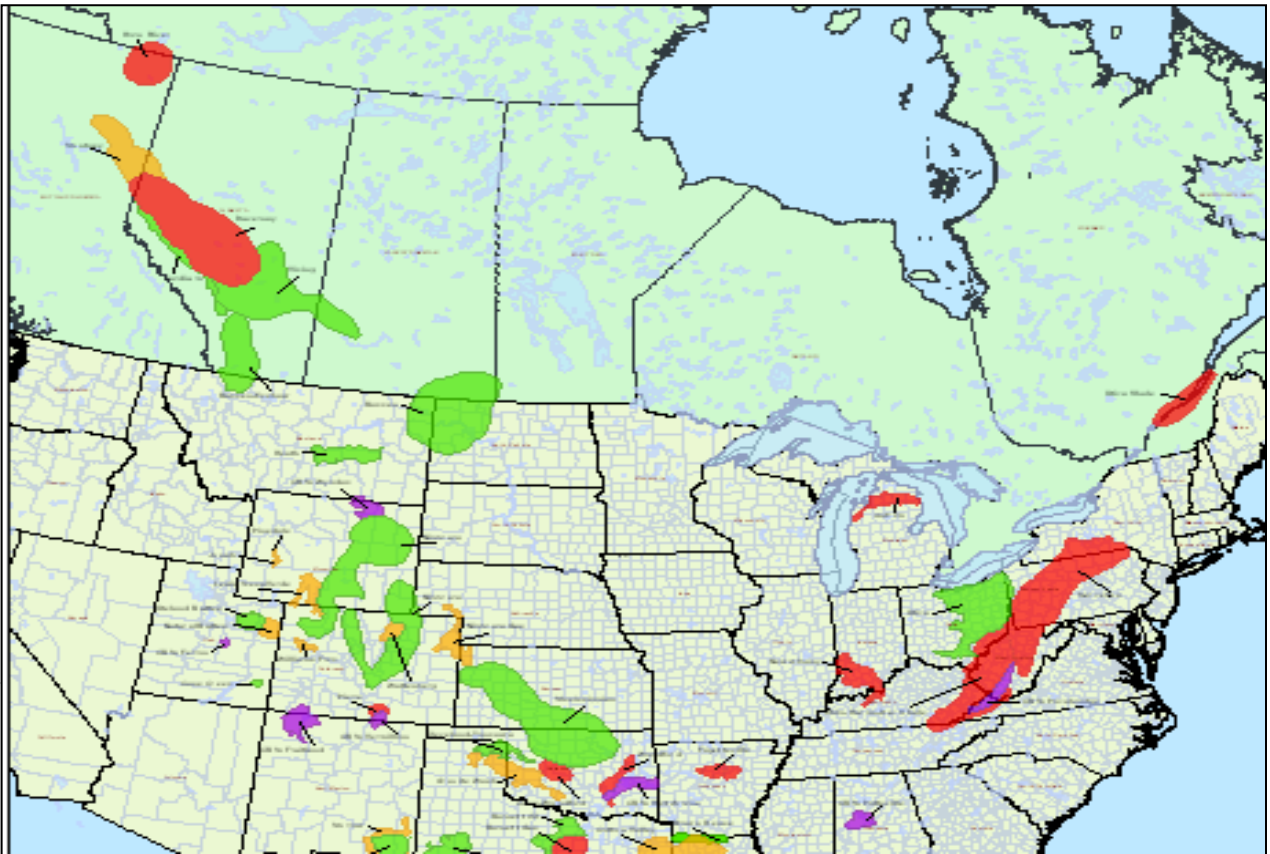
Another evaluation the company made is in Gulf of Mexico Deepwater in Miocene and Eocene hydrocarbon play trends. Several lead prospects were identified in subsalt to drill. One of the recommended subsalt prospect was drilled with substantial results. The company work experience in Gulf of Mexico recommendations for the bid leases are significant. An example of subsalt prospect is shown in Figure-6.

Figure - 6



The company evaluated the North American unconventional oil and gas plays to provide recommendations for the client to bid. Figure - 7 shows the significant unconventional plays in North America that are evaluated by the company.

Figure - 7



The company evaluated the onshore kwanza and lower Congo basins of Angola to provide prospectivity in the bid leases to clients. The company evaluations are competitive and the knowledge accumulated in world-wide basins will be of potential use for identifying hydrocarbon play trends, prospect identification, acquisition, drilling and reservoir development.